

CELEBRATING  
70 YEARS



Vidyamandir Trust, Palanpur

# Roadmap

- Trust Overview
- History
- Community Involvement
- Achievements
- Future Plans

# Roadmap

- **Trust Overview**
- History
- Community Involvement
- Achievements
- Future Plans

# Vidyamandir: Holistic Education

**Campus Reach**

**Community**

**14 Campuses**

**6000 students**

**124 institutions**

**500 staff**



# Mamtamandir

## School for the differently-abled

- Integrated approach

## Free accommodation, food, schooling

- 300 Trust-operated hostels

## Skill-based learning

- Light engineering, printing press



# Teachers' Training

## Teachers' Training College

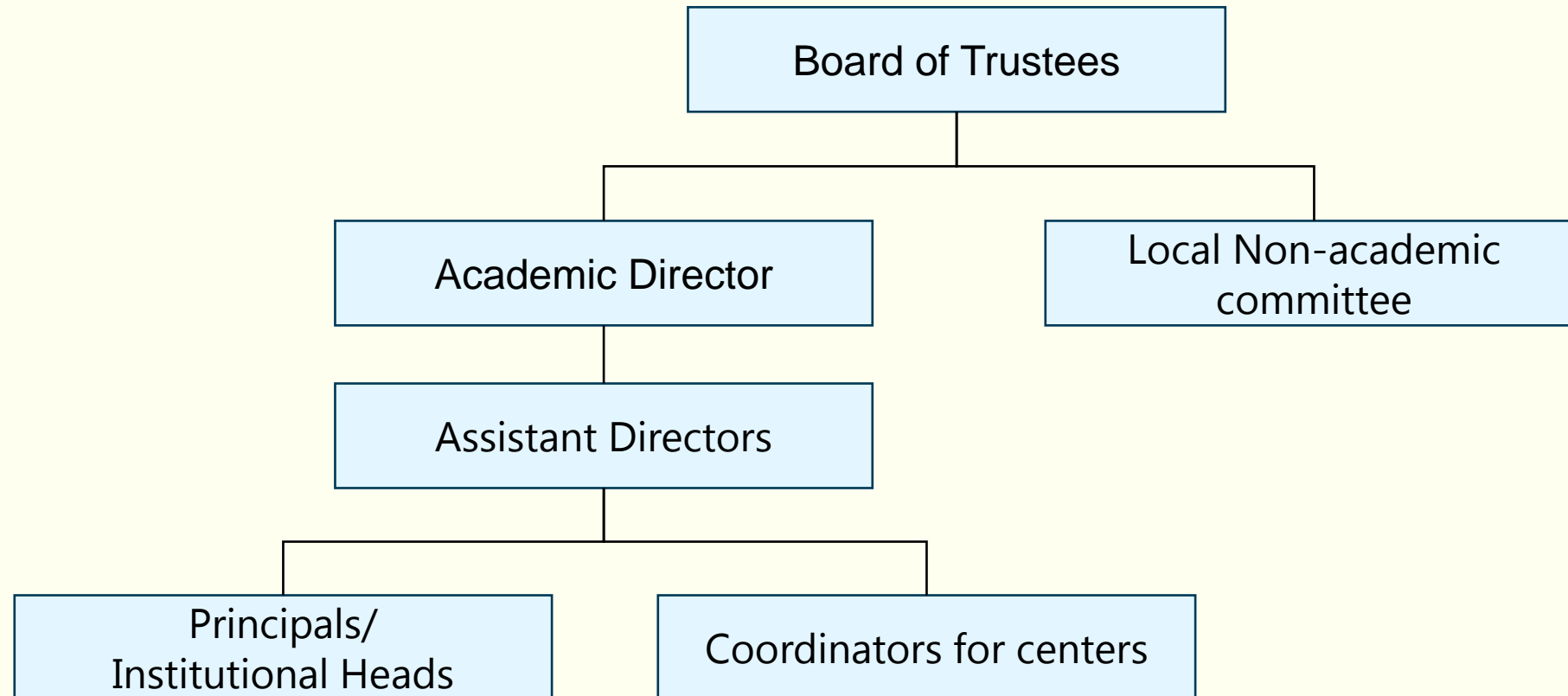
- Pre-primary to higher secondary
- Visually and hearing impaired

## Wide-reaching impact

- High teaching standards in Vidyamandir
- Better teachers across Gujarat



# Running of the Trust



# Roadmap

- Trust Overview
- **History**
- Community Involvement
- Achievements
- Future Plans



# Vidyamandir through the ages



Vidyamandir was founded in 1948 by Kanubhai Mehta



Kanubhai and Suryakantbhai built the foundation for Vidyamandir

# Roadmap

- Trust Overview
- History
- **Community Involvement**
- Achievements
- Future Plans

# Community Involvement

**Exceptional commitment from Palanpuri Jains**

**Prominent role of women**

**Consistent support of donors**





# Founding donors



Kesarben Mehta, Leelaben G Mehta and Leelaben S Mehta



Taleybaug, donated to Vidyamandir by Kesarben Mehta



# Distinguished donors



Chanchima donated the iconic Tower building



Capt. Ahmad Khan Lohani donated his farm in Dhaniana

# Roadmap

- Trust Overview
- History
- Community Involvement
- **Achievements**
- Future Plans

# Achievements

## Academic

- Top performers in the state
- More students to Medical College than any other school in Gujarat

## Sporting

- 230 students at state/national level
- Students at international level





# Impact

## Improved educational outcomes

- Development of the city
- Improved literacy rates

## Emergence of Palanpur as medical hub

- High concentration of doctors
- Center for medical patients
- Stimulation of local economy



<b>Gujarat</b>	<b>1 medical student/13,000</b>	<b>0.7 doctors/1,000</b>
<b>Palanpur</b>	<b>1 medical student/2,400</b>	<b>2.1 doctors/1,000</b>



# Roadmap

- Trust Overview
- History
- Community Involvement
- Achievements
- **Future Plans**

# Future Plans

## Strengthening of existing institutions

- Adoption of new technologies and ideas
- Retention of core values

## Skill-development center

- Specific job training



# Conclusion

